

COMPUTER SYSTEMS RESEARCH

Running Version of Program

1. Your name: Asa Kusuma, Period: 3
2. Date of this version of your program: 6/10/2008
3. Project title: Analysis of Runner Biomechanics Through Image Processing
4. Describe specifically what files are needed and the command(s) necessary to run your program

What's needed:

The python script, program.py
Two images of the runner

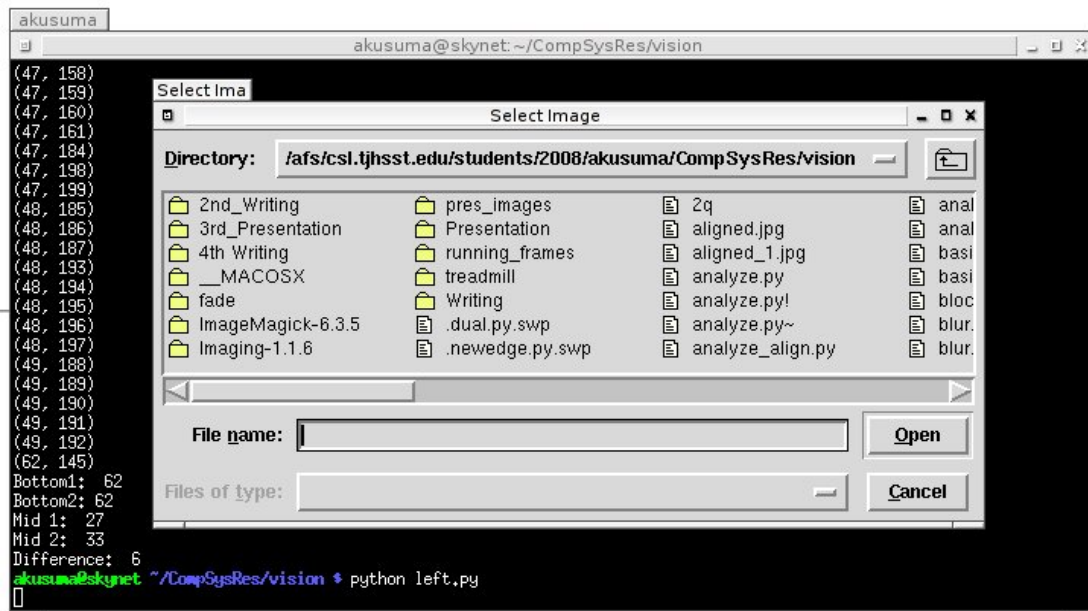
How to run:

Run this command in the terminal
python program.py

5. Your program is running, now what? List test input(s) for the user to interact with your program. Specifically what should the user expect to happen?

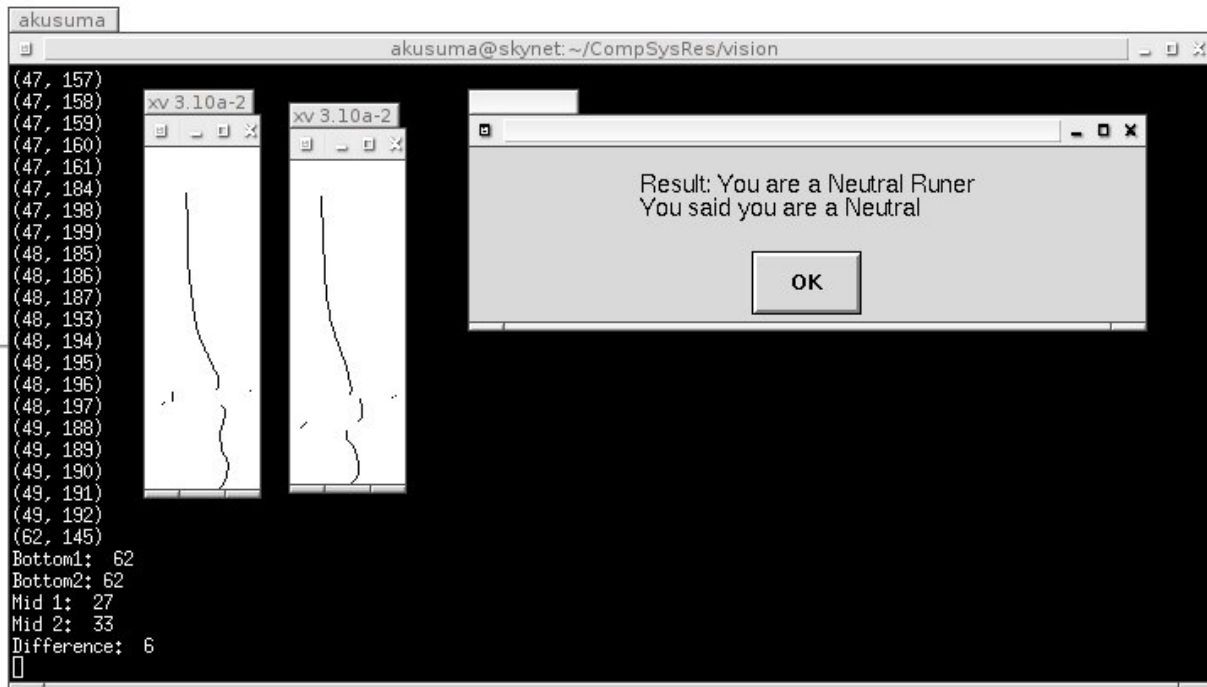
Input(s):

Dialog boxes appear, asking for two images and info about the runner.



Program's expected response(s):

Another dialog box appears, giving the pronation of the runner.



6. What about user input errors? Are there incorrect user input(s) that your program handles?

If the user closes one of the boxes, the program just assumes the default value for the selection. If the user inputs an image that does not have a .jpg file extension, it asks for the image again.

7. What is the programming doing, demonstrating, or analyzing? What is the user looking for in order to understand what you've been studying and developing with this project?

The program is analyzing the biomechanics of a runner. The user inputs images of the runner, and the program outputs the pronation of the runner.